



YTTERSTONE®

www.ytterstone-vertrieb.com



ytterstone®
The special stone





The background of the entire page is a close-up photograph of a natural stone with a complex, marbled pattern. The colors range from light beige and cream to deep, rich browns and dark, almost black veins. The patterns are organic and flowing, characteristic of natural stone like marble or granite. The lighting is even, highlighting the texture and depth of the stone's surface.

Content

- 04 How it all began
- 06 The special stone
- 08 Mining in opencast mining
- 10 Material and workmanship
- 12 Areas of application
- 14 Bathroom
- 18 Living area
- 22 Wall and floor
- 26 Shopfitting
- 30 Facades
- 36 Decors
- 38 Training
- 40 Technical specifications
- 42 New manufacturing method
possible everywhere

How it all began



Development history by Ytterstone®

05

In 1998, Heiko Neupert met an artist who had started to mirror sediment layers to win. Fascinated by this idea, he then developed the product for 2 years and in 2000 filed a patent for his new development. Since all necessary test certificates were created, the marketing could begin. Since then, over 10,000 large and small projects worldwide have been fulfilled to the fullest satisfaction of the customers.

For this revolution in the application and processing of natural stone, Mr. Heiko Neupert was the first German to win the „Grand Prix“ at the 2004 International Patent and Inventory Fair in Geneva.

The European patent was granted in 2013. Patent No .: 1268954

New patent was registered on 13.05.2015.

In 2016, Mr. Heiko Neupert received the Federal Prize at the International Handicrafts Fair in Munich for his invention.

The special stone

06



What is ytterstone® – The special stone?

Ytterstone® is produced in opencast mining in sand pits. Through a special binder, the naturally grown Sediment layers mirrored in 1-5 mm strength gained. This creates a more flexible thinner Sandstone, but opposite the known sandstone (contains chalk and thus attracts the smog!) Antistatic And therefore does not have to be cleaned!

Sandstone and **ytterstone®** is a natural, grown product in many millions of years. Through its structure and a wide range of colors, he can be used both architecturally and architecturally around the house as well as in the house, use. It gives every object an exclusive and distinctive character.

How beautiful it would be if you were not thinking about the statics,
Processing, wall thickness, etc. ...

We would like to offer you this opportunity on the following pages!

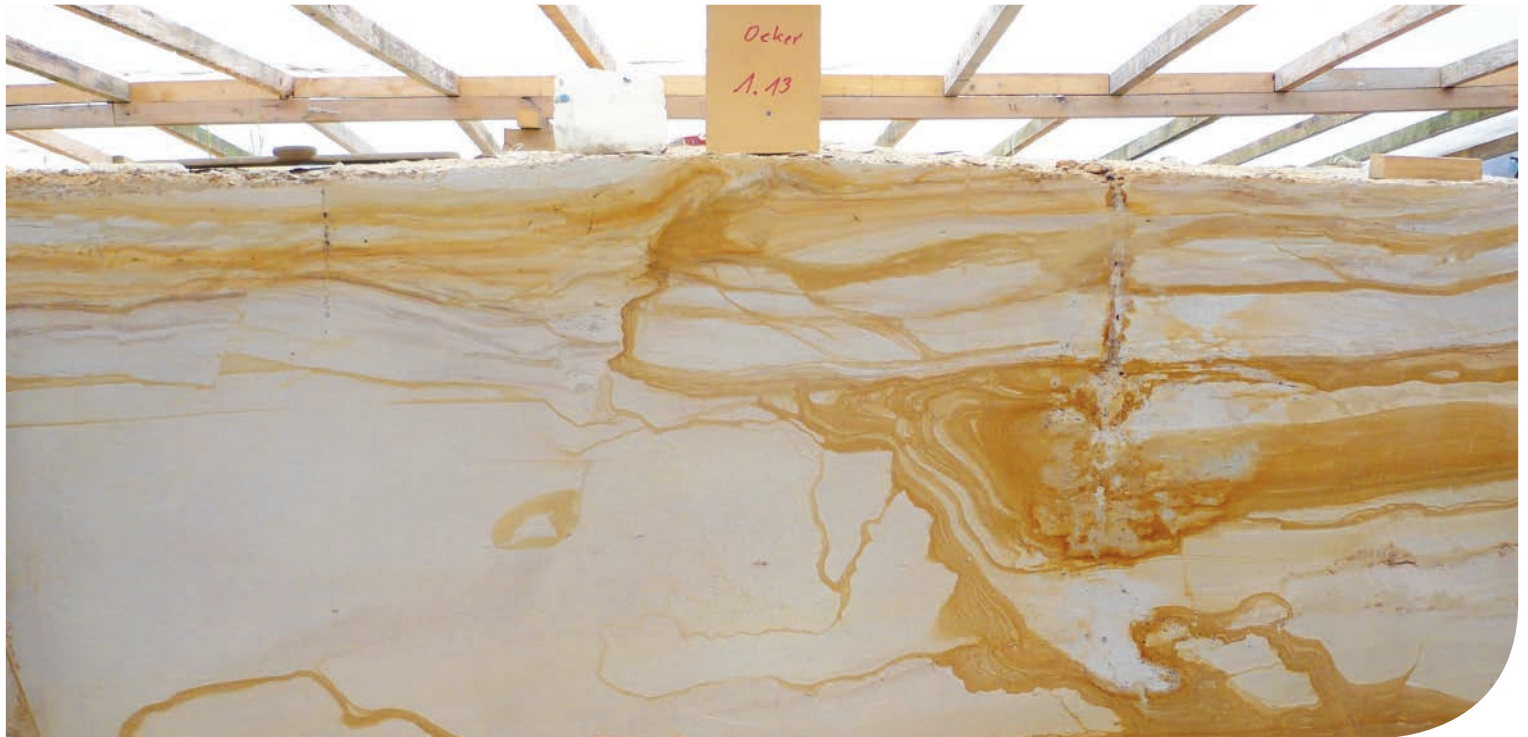
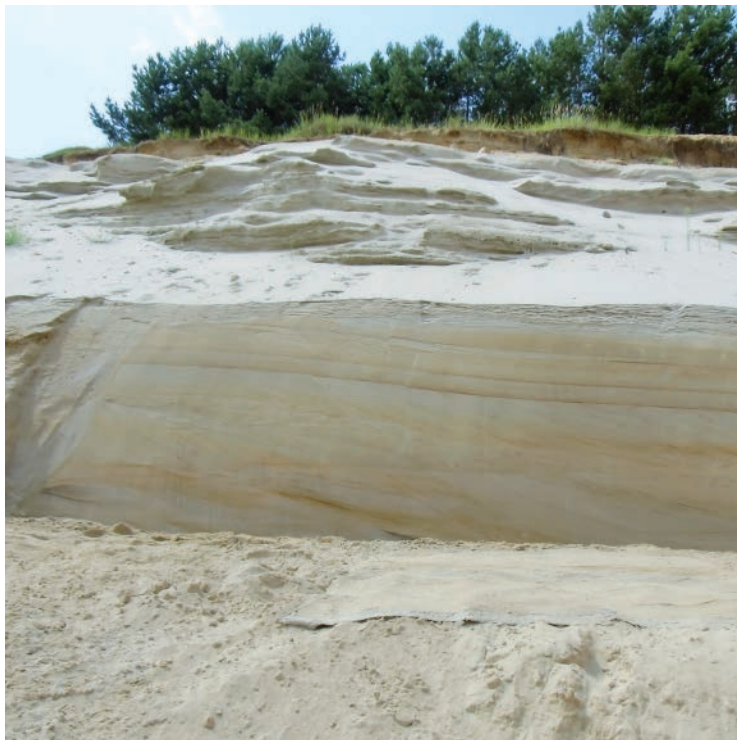
Mr. Heiko Neupert has succeeded in breaking down a sandstone with a thickness of 1-4 mm by means of an innovative process and to bond to a carrier material. Thus the laying is not a problem for trained craftsmen.

However, please ensure that your tradesman has a ytterstone® Trader Certificate. Whether without joints or with joints, whether on straight surfaces, rounding or even on balls - even backlit surfaces are no problem. Our **ytterstone®** “The special stone” does everything.

Reduction in opencast mining

08





Material and workmanship

10



Flexible building in its most beautiful form

Take advantage of **ytterstone**[®]'s design capabilities to create a living space or business space certain something – fast and easy.

Whether it is craftsmanship or do-it-yourself – processing is no problem for craftsmen. For seamless design of nature-grown trails, you only need a 2-day seminar. The sandstone wallpaper or the wall panel can be easily installed without training.

11

Advantages of **ytterstone**[®]

- Weighs only about 2.5 kg per m²
- Plates can also be processed without training
- As a tool rich pencil, cutter knife, wooden wedge, tooth spatula and water scale
- Round walls can be easily clad
- Corners and edges are adapted by means of hot air (corner rails are omitted)
- Plates are as uncommon as the material itself
- Dust-repellent
- With our special seal **ytterstone**[®] is water resistant
- Can be glued to any surface - also wood and metal

Areas of application



12



A stone for all occasions

Ytterstone® sandstone are no limits. It can be attached to all objects, can be deformed and thus nestles in all the recesses. A few examples where sandstone can be used: Living area, Entrances, floorboards, staircases, workrooms, bathrooms, saunas, kitchens, WC, living room, bedroom, Children's room, terrace u.v.m.

Business area

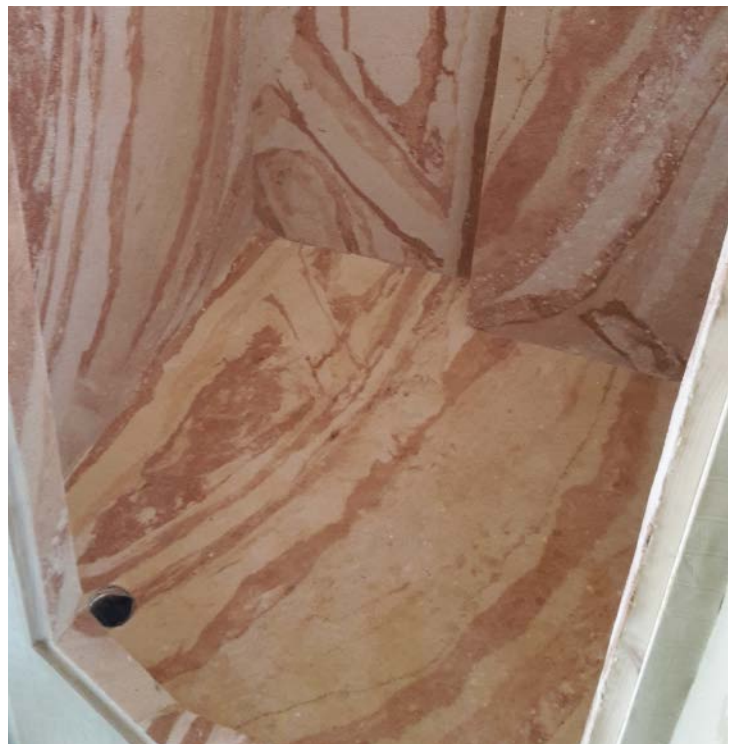
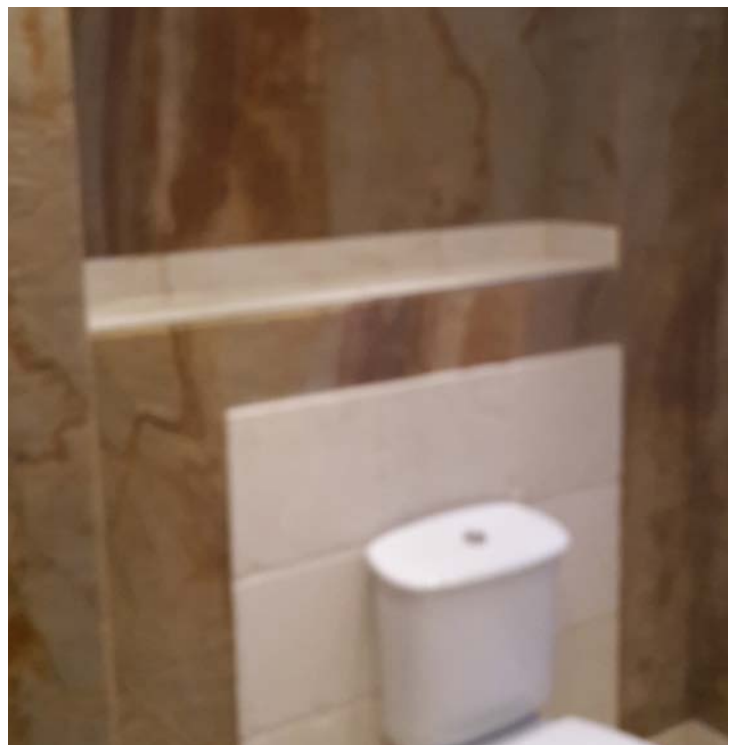
Banks, offices, reception areas, gastronomy, hotels, conference rooms, shop areas, swimming pools, Wellness- and Saunalandschaften u.v.m.

Facades

Directly or as a curtain wall – **ytterstone®** is price-competitive and visually unbeatable compared to any other natural stone facade. Ytterstone® is also not a problem for full heat protection. In addition, you can build in the new building save a lot of money in statics. Whether with or without jointing - according to your wishes. Through special impregnations the surfaces are permanently protected against negative environmental influences, soiling and graffiti and **ytterstone®** facade cleans itself. Even after 25 years, your façade with **ytterstone®** looks the same as after the laying.

Bathroom

14



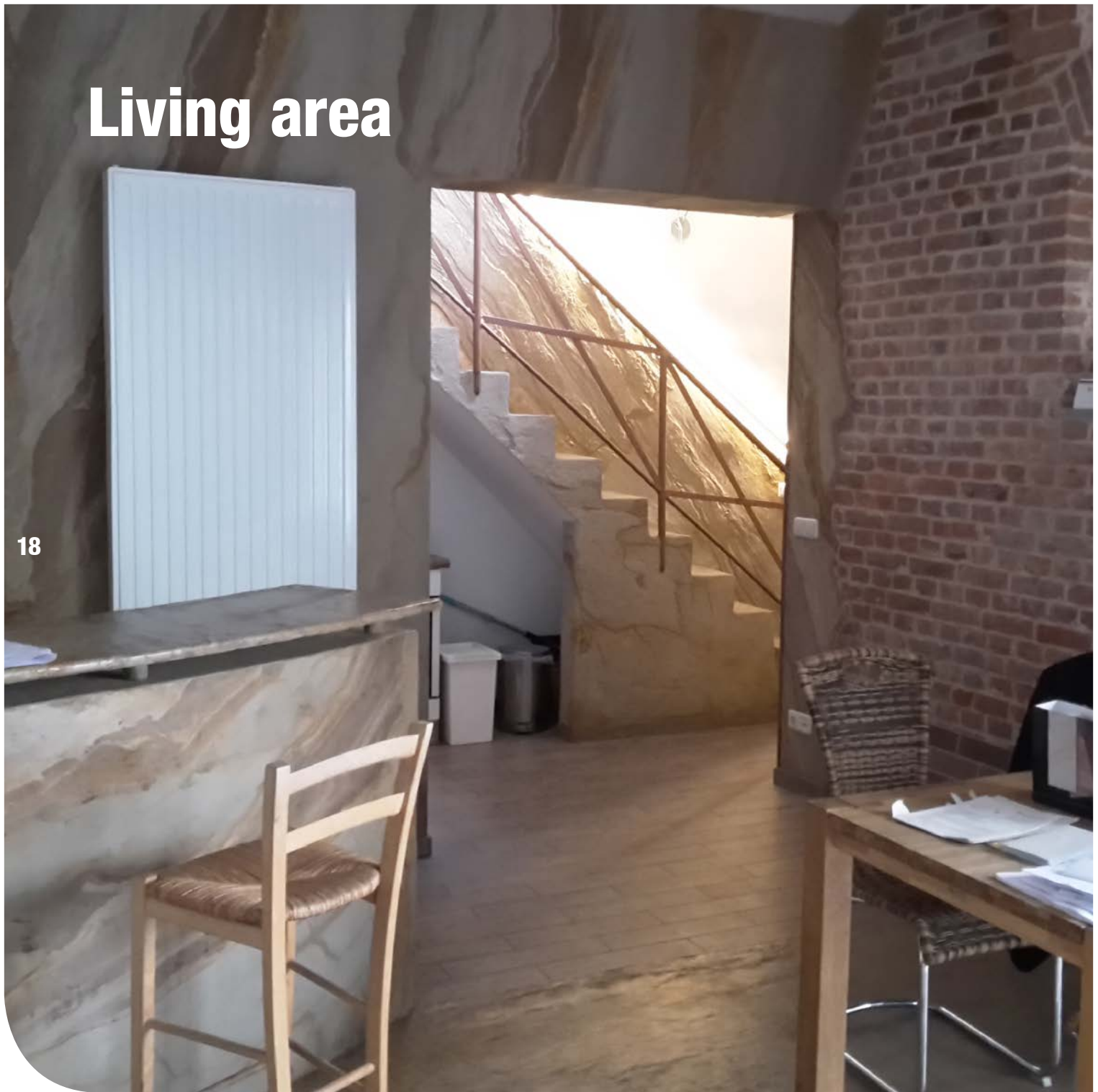






Living area

18









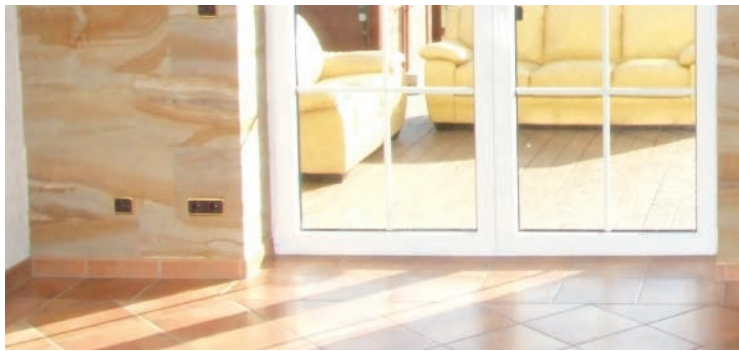
Wall and floor



22







Shopfitting

26





MOSCHINO
JEANS





Facades





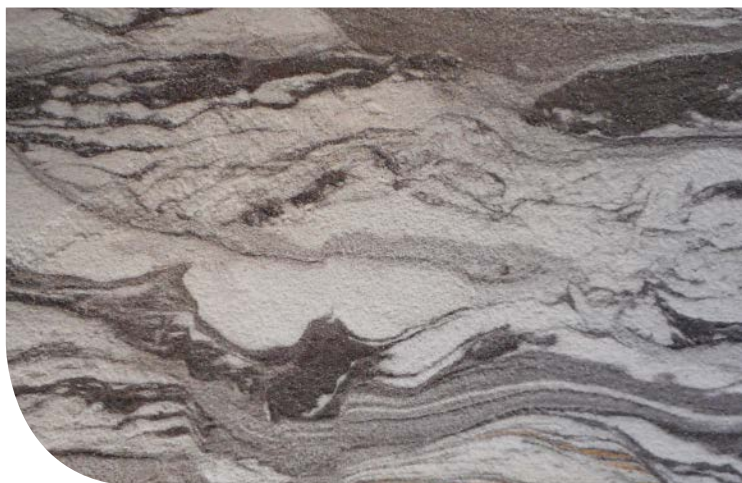
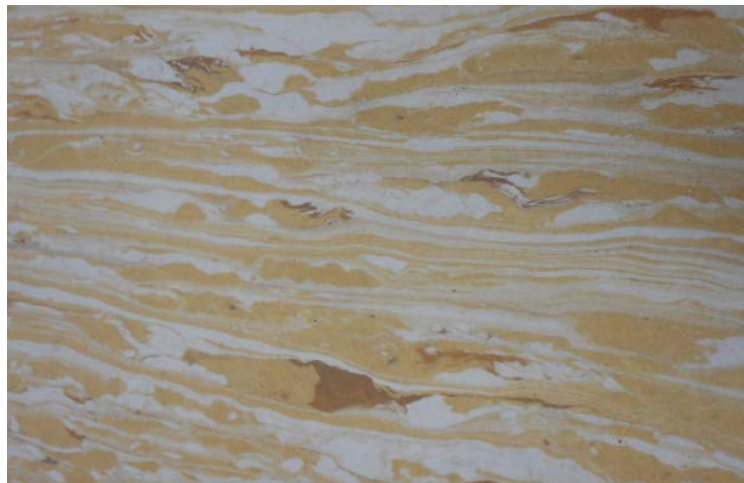


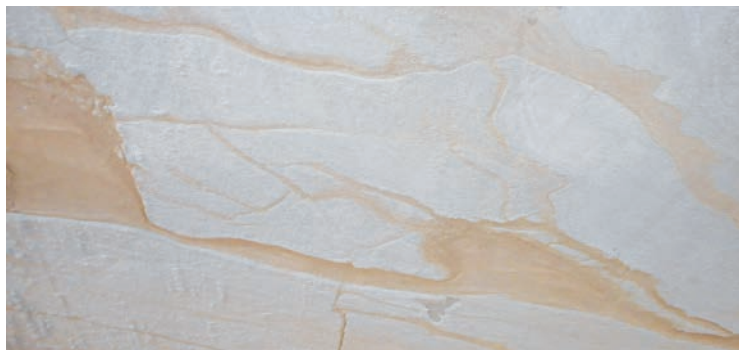
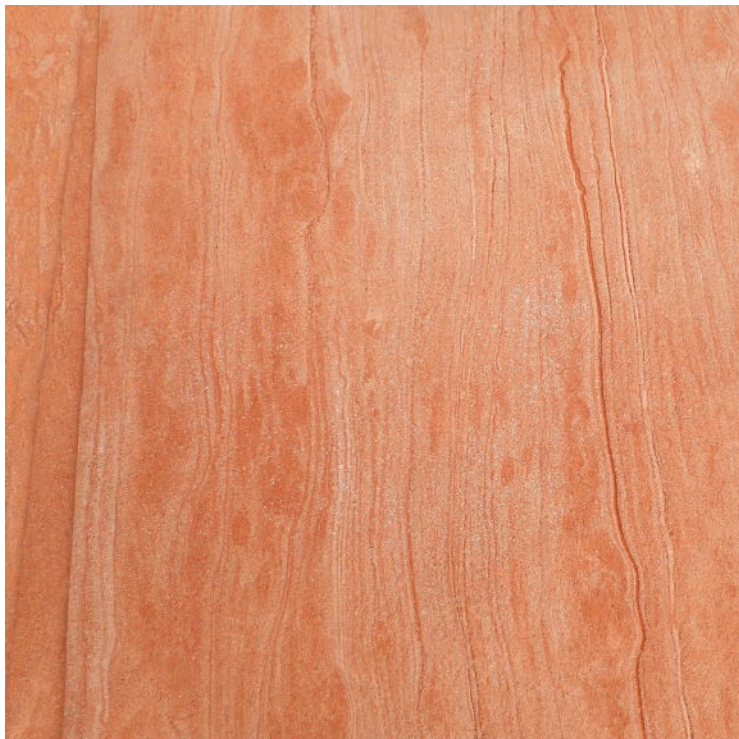






Decors





Training





Technical specifications

iStock
by Getty Images™

iStock
by Getty Images™

iStock
by Getty Images™

iStock
by Getty Images™



iStock
by Getty Images™

iStock
by Getty Images™

The philosopher's stone

ytterstone[®] has been critically examined by independent experts in renowned institutes. The results meet the highest requirements of the construction industry:

Fire behavior DIN 4102, part 1, item 6.2 DIN 4102, part 14

B1 and passed Critical Radiation Intensity > 1.1; Integral value of light attenuation 0-0.7

Chair roll design DIN EN 425 After 75,000 revolutions; No visible changes

formaldehyde free from formaldehyde

Abrasion resistance DIN 52368; After 100,000 revolutions no visible changes

Pollution / cleaning DIN 51958 (EN 423); **ytterstone**[®] is antistatic, cleaning on walls are no longer necessary

Anti-slip steps R 13 (inclination angle > 35 °)

Dimensional behavior DIN 434, DIN 51967, DIN 16860 in the manufacturing direction 0.14 mm; at right angles to the direction of manufacture 0.05-0.17 mm; Slight dimensional changes 0.03-0.17 mm

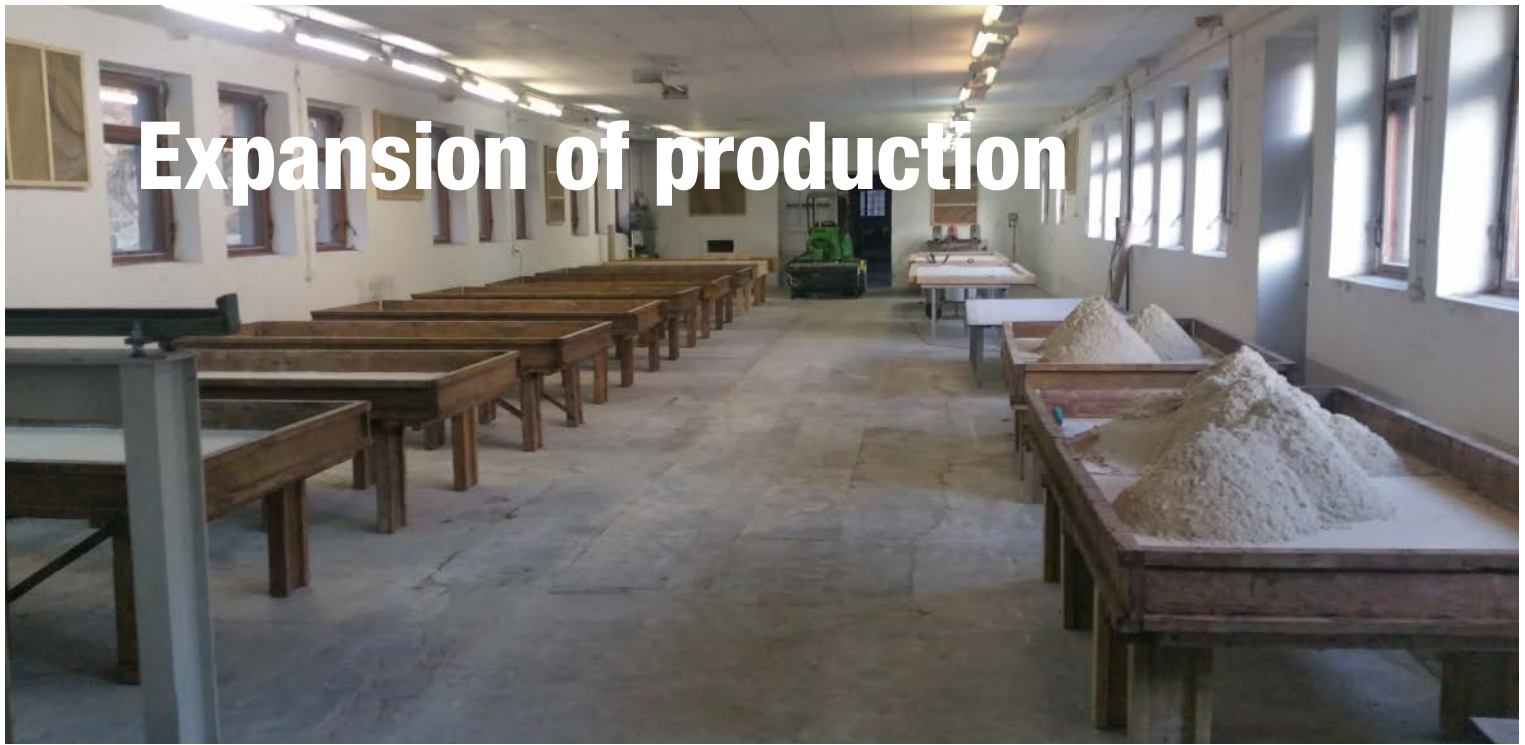
Peel resistance DIN 16860; Under normal climatic and thermal climatic conditions 1.76-1.98 N / mm
Heat transmission DIN 66098; **ytterstone**[®] is suitable for underfloor heating



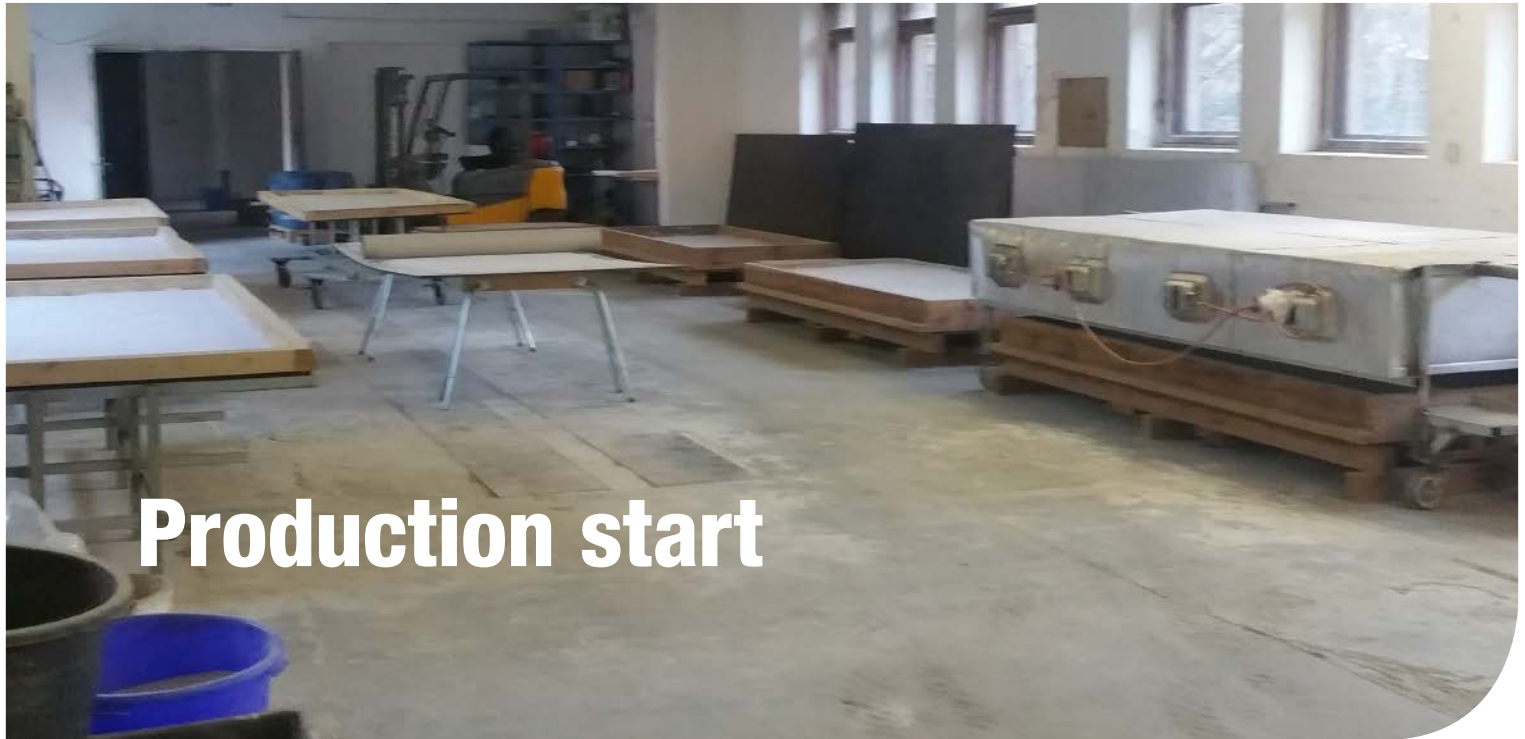
42

New manufacturing method possible everywhere

Expansion of production



Production start





Ytterstone®

www.ytterstone-vertrieb.de

ytterstone® Vertriebs GmbH

Headquarters:

Germany

Main branch and production

Jahnstrasse 61

14929 Treuenbrietzen

Mobile: 004915161016752

Sales Exhibition:

Berliner Strasse 61

14467 Potsdam

info@ytterstone-vertrieb.de



www.ytterstone-vertrieb.com